

# CROWN



*An Investment in Leisure 1981*



# CROWN for 1981 . . .

Times change, and A-Line changes with them — to ensure that our customers enjoy all the benefits of modern design, tasteful contemporary colour schemes and those up-to-date refinements which do so much to create a relaxed and happy holiday.

For 1981, the entire Crown range has been substantially altered and improved, gaining a complete new body style based on the traditional 'V' roof yet with a modern exterior treatment. An attractive colour scheme has been chosen for the range, comprising a main body colour of Glace, lower panels in Beaver Brown and the skirt in Van Dyke brown. Coach lines in beige and brown add to the distinctive appearance, as do the new wheel spats textured to match the lower panels. The front side windows have been re-styled for an even smarter aspect, and each model now has a full width moulding running across the front, incorporating road lighting and grab handles. Additionally, new exterior doors and improved roof lights have been incorporated into all models. The 'inside story' on the Crown range is equally attractive — the new colour scheme featuring furnishings in shades of Oatmeal and Rust, blending with Beige 'weave effect' wall covering and completed by Chocolate Brown carpeting. The furniture is in 'Elm Effect' ply with feature mouldings, and special attention has been paid to the double panelling of furniture — thus greatly improving the interior appearance of items such as wardrobes. Fridges are now standard on all models, and all hammocks have been replaced by comfortable and convenient Pullman bunks.

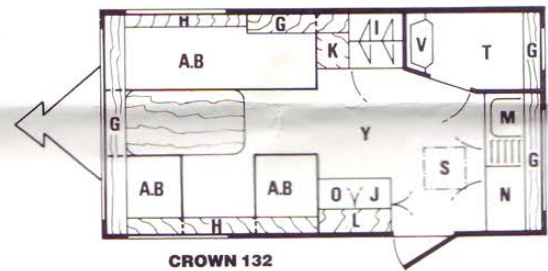
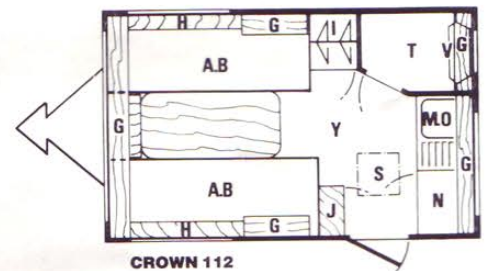
The Crown range of models features 9 layouts — three of them introduced for the first time this year. There just has to be something for everyone . . .



# CROWN 112

# CROWN 132

The smallest models in the range, the 112 and the 132 still offer plenty of comfort for their size — and are ideal for that quick weekend away or the longer holiday for two. The 112 has a body length of just under 11'6", while the 132 is 2 feet longer and naturally offers quite a lot more space. The tinted acrylic windows enhance the appearance of the two models. Sleek and compact, the 112 and 132 are tops in the two-berth field.

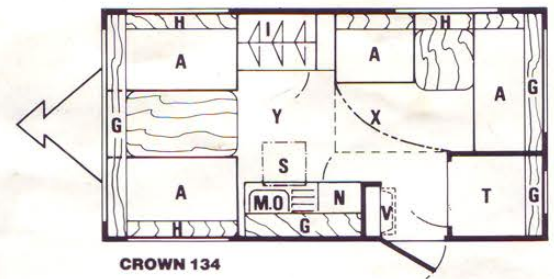


### Key to Floorplans:

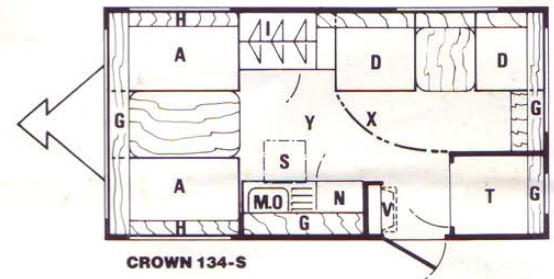
- |                      |                      |
|----------------------|----------------------|
| A Dinette/Double Bed | M Sink/Drainer       |
| B Dinette/Single Bed | N Hotplate/Grill     |
| G Wall Locker        | O Fridge             |
| H Shelf              | S Rooflight          |
| I Wardrobe           | T Toilet Compartment |
| J Cupboard           | V Hand Basin         |
| K Chest of Drawers   | Y Fitted Carpet      |
| L Cocktail Cabinet   |                      |

# CROWN 134 134S

Carefully designed to give the best possible use of space, whilst still retaining a smart and uncluttered appearance, the 13 foot models in the Crown range offer a choice of layouts to perfectly suit the family. Incorporated into the design of the 134 and the 134S are the new Pullman bunks, each of these models providing comfortable accommodation for four people in surroundings that are outstandingly convenient and attractive.



CROWN 134

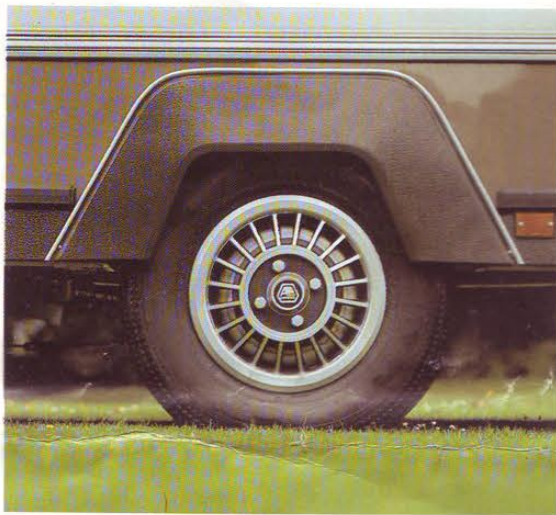


CROWN 134-S

### Key to Floorplans:

- |                                      |                      |
|--------------------------------------|----------------------|
| A Dinette/Double Bed                 | N Hotplate/Grill     |
| D Dinette/Single Bed with Bunk above | O Fridge             |
| G Wall Locker                        | S Rooflight          |
| H Shelf                              | T Toilet Compartment |
| I Wardrobe                           | V Hand Basin         |
| M Sink/Drainer                       | X Dividing Curtain   |
|                                      | Y Fitted Carpet      |

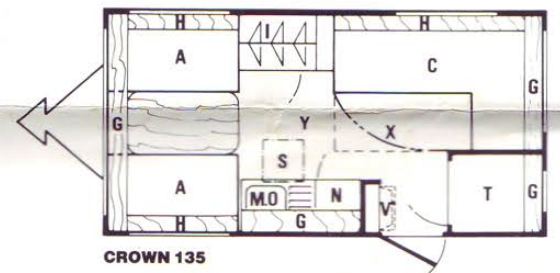
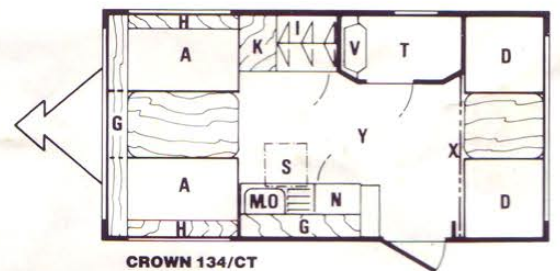




# CROWN 134CT 135

Clean-lined, stylish and compact, the 134CT and 135 models offer two further layout variations within the 13 foot body length — with the aid of additional refinements.

The 134CT is a four berth model featuring a unique Pullman bunk folding down from the ceiling, and with a layout design which incorporates a central toilet. The fold-down Pullman bunk is also featured in the 135, and together with two double beds gives this model the facility to accommodate five people in comfort.



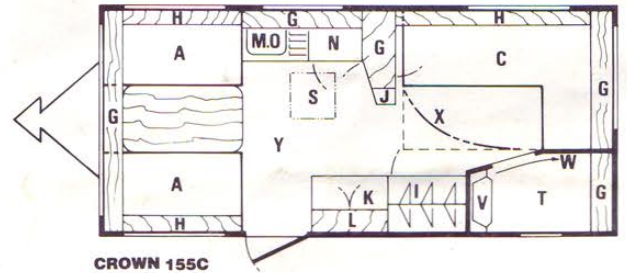
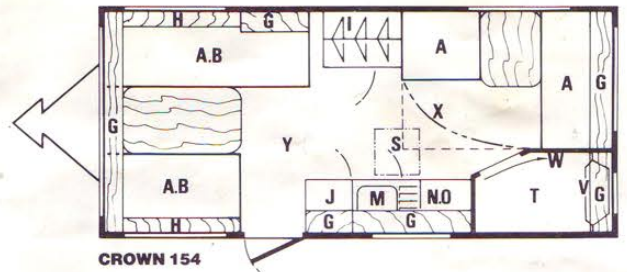
### Key to Floorplans:

- |                                      |                      |
|--------------------------------------|----------------------|
| A Dinette/Double Bed                 | K Chest of Drawers   |
| C Settee/Pull-out                    | M Sink/Drainer       |
| D Double Bed with Bunk above         | N Hotplate/Grill     |
| D Dinette/Single Bed with Bunk above | O Fridge             |
| G Wall Locker                        | S Rooflight          |
| H Shelf                              | T Toilet Compartment |
| I Wardrobe                           | V Hand Basin         |
|                                      | X Dividing Curtain   |
|                                      | Y Fitted Carpet      |

# CROWN 154 155C

These 15 foot Crowns offer all the facilities of the 13 foot models, but with the added advantage of extra space. The new interior colour scheme has particular impact in the larger setting, creating an atmosphere of warmth and elegance.

The toilet compartments are most attractive, with brown and white vinyl wall covering and matching roller blind. The kitchen unit with crockery cupboard above is designed to take the optional oven cooker. This can be fitted with the minimum of effort at a later date, or is available as a factory fitted extra.



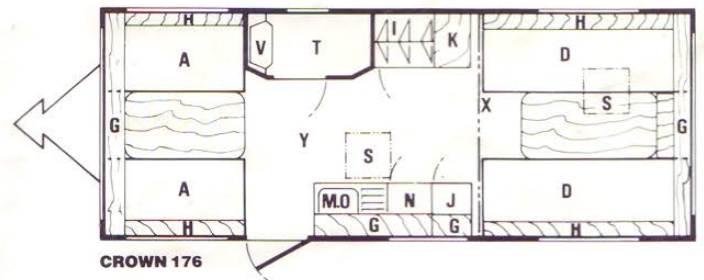
### Key to Floorplans:

- |   |  |   |                    |
|---|--|---|--------------------|
| A | Dinette/Double Bed                               | L | Cocktail Cabinet   |
| B | Dinette/Single Bed                               | M | Sink/Drainer       |
| C | Settee/Pull-out<br>Double Bed with<br>Bunk above | N | Hotplate/Grill     |
| G | Wall Locker                                      | O | Fridge             |
| H | Shelf  | S | Rooflight          |
| I | Wardrobe   | T | Toilet Compartment |
| J | Cupboard   | V | Hand Basin         |
| K | Chest of Drawers                                 | W | Sliding Door       |
|   |  | X | Dividing Curtain   |
|   |  | Y | Fitted Carpet      |





# CROWN 176



### Key to Floorplan:

- A Dinette/Double Bed
- D Dinette/Single Bed with Bunk above
- G Wall Locker
- H Shelf
- I Wardrobe
- J Cupboard
- K Chest of Drawers
- M Sink/Drainer
- N Hotplate/Grill
- O Fridge
- S Rooflight
- T Toilet Compartment
- V Hand Basin
- X Dividing Curtain
- Y Fitted Carpet

At just under 18 foot, the 176 is the largest model in the Crown range. Six berths with end kitchen make it ideal for the larger family, and there's plenty of room to store the numerous items that people like to take along on holiday. For 1981 the layout of the 176 has been altered, and the model now features a central toilet compartment. The sleeping facilities comprise four single beds and a pull-out double bed.

# CROWN SPECIFICATIONS

Dimensions				Weights			Tyre Sizes	Bed Sizes				Model
Shipping length	Body length	Overall width	Overall height	Maximum Gross Weight	Ex Works Weight	Payload	Radial	Single	Double	Pull-out Double	Bunk	
112	14'10 1/4" (4524 mm)	11'6 1/4" (3508 mm)	6'10" (2083 mm)	15.74 cwt 800 kg	12.20 cwt 620 kg	3.54 cwt 180 kg	155 SR — 13	6'0" x 2'3" or 5'9" x 2'3"	One 6'0" x 4'6"			112
132	16'11 1/4" (5162 mm)	13'7 1/4" (4146 mm)	6'10" (2083 mm)	17.51 cwt 890 kg	13.97 cwt 710 kg	3.54 cwt 180 kg	155 SR — 13	6'0" x 2'3" or 6'0" x 2'2"	One 6'4" x 4'0"			132
134 134S 135 134CT	16'11 1/4" (5162 mm)	13'7 1/4" (4146 mm)	6'10" (2083 mm)	17.51 cwt 890 kg	13.97 cwt 710 kg	3.54 cwt 180 kg	155 SR — 13	6'0" x 2'3" or 6'0" x 2'2"	6'4" x 3'9"	6'4" x 3'9"	6'0" x 1'10"	134
154 155C	19'1" (5817 mm)	15'9" (4801 mm)	6'10" (2083 mm)	17.51 cwt 890 kg	13.97 cwt 710 kg	3.54 cwt 180 kg	155 SR — 13	6'0" x 2'3" or 6'0" x 2'3"	6'4" x 3'9"	6'0" x 3'11"	6'0" x 2'0"	134S
176	21'3 1/8" (6490 mm)	17'11 1/2" (5474 mm)	6'10" (2083 mm)	19.68 cwt 1000 kg	15.35 cwt 780 kg	4.33 cwt 220 kg	155 SR — 13 Reinforced	Two 6'0" x 2'3" or 6'0" x 3'11"	6'4" x 4'0"	6'0" x 3'11"	6'0" x 2'0"	154
				17.51 cwt 890 kg	13.97 cwt 710 kg	3.54 cwt 180 kg	155 SR — 13	6'0" x 2'3" or 6'0" x 2'3"	6'4" x 3'9"	6'0" x 3'11"	6'0" x 2'0"	135
				19.68 cwt 1000 kg	15.74 cwt 800 kg	3.94 cwt 200 kg	155 SR — 13 Reinforced	6'0" x 4'0" or 6'0" x 4'0"	6'4" x 4'0"	6'0" x 3'11"	6'0" x 2'0"	155C
				21.65 cwt 1100 kg	17.51 cwt 890 kg	4.13 cwt 210 kg	175 SR — 13	Two 6'0" x 2'3" or 6'0" x 2'3"	6'4" x 4'0"		Two Bunks 6'0" x 2'0"	176

A-Line Caravans Limited pursue a policy of continuing improvement in design and performance of its products. The right is therefore reserved to vary specifications without notice.



All caravans described in this brochure conform to the British Standard for Touring Caravans: BS4626.

Your A-LINE agent:



A-Line Caravans Limited pursue a policy of continuing improvement in design and performance of its products. The right is therefore reserved to vary specifications without notice.



## A-LINE CARAVANS LIMITED

WEST CARR LANE SUTTONFIELDS INDUSTRIAL ESTATE KINGSTON UPON HULL  
NORTH HUMBERSIDE HU8 0BU

Tel. Hull (0482) 825111 Telex 527269